



# USER MANUAL

SUN SAFES MFG. CO. KOREA



V.V4YES150403



## Safety Precautions

Safety precautions are to prevent any unexpected risk or damage. Please read before use.



- Be careful when opening and closing door. Finger or objects may get stuck.
- Keep away from children.
- Do not hit edge of safe to avoid injury.



- Safe is heavy, be careful when moving or installing safe to avoid any injury.
- Firmly fix safe to ground when installing. When moving safe, inquire a professional if needed.
- Improper handling of safe can cause damage to floor or table.



- Avoid placing fragile objects, such as ceramic or glass, on safe. They may fall and cause injury.

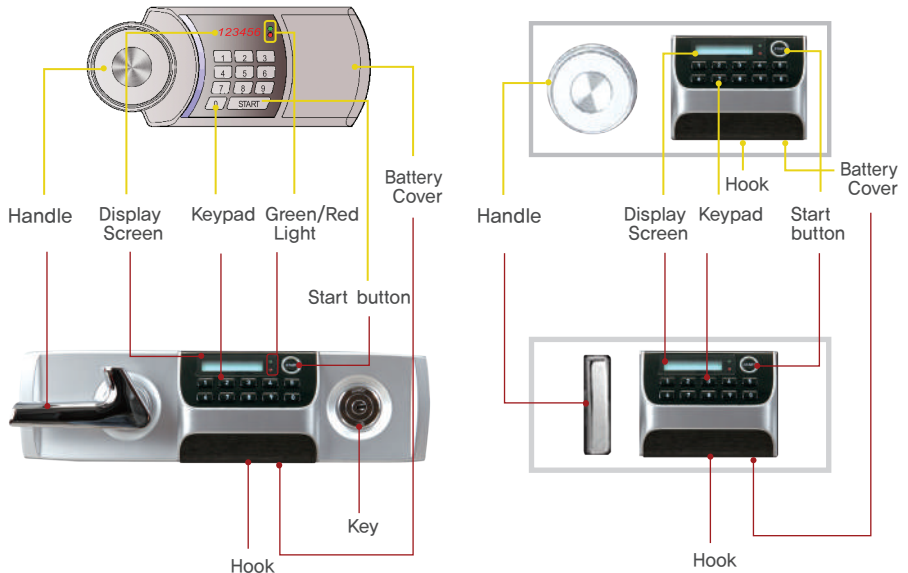


- Place safe on flat surface. Otherwise, safe door may not close.

## Before Use

- Product may malfunction if any foreign metal substances or moisture enter keypad.
- Do not scratch keypad with any sharp material.
- Do not apply excessive force to keypad.
- Avoid exposure to any chemicals (gasoline, benzene, solvent, acetone, thinner, etc.)
- Avoid direct fire or heat.
- Remove batteries when safe is not used for long time.
- Excessive force to safe handle may cause breakage.
- Safe can be broken into by using cutting or welding tools. Our company is not liable for any stolen items.

## Keypad Overview



## Keypad Lock Mode

1. Press START for more than 3 seconds until “Act” appears. “Act” message signifies activation of keypad lock mode. Any keypad input will only display “Act.”
2. To deactivate keypad lock mode, press START for more than 3 seconds until “dEAct” appears.

**Notice!!** Keypad lock mode will remain despite removal of batteries.

## Replacing Batteries

- ▶ Replace batteries immediately when
  - screen displays “Lo\_bAt.”
  - safe door fails to open when “OPEn” message appears after password is entered.
  - “good” appears on display along with “beep beep” sound after password is entered.
  - screen fails to turn on after you press START button.

## How To Replace Batteries

- ① Remove battery cover.
- ② Insert batteries.
- ③ Put battery cover back in until a click is heard.



### Attention

- After battery replacement, confirm safe is properly working before closing door.
- Use 1.5V alkaline batteries (AA x 4).
- Proper insertion of the batteries is confirmed once screen displays “SAFE” ▶ “\_0...” ▶ “good” message appears and beep is heard.

## Opening / Closing Door

### 1 Press START button.

- "-----" will be displayed on screen.

### 2 Input six-digit password.

- Input factory password "1,2,3,4,5,6".
- "OPEN" will be displayed on screen along with beep sound.



- Press START button twice for security mode to hide password.
- Press START button to cancel password entry.
- Safe must be opened within 3–4 seconds
- "Err-03" indicates incorrect password.
- 5consecutive incorrect passwords will sound alarm for 3 minutes. Press START button and enter correct password to stop alarm.

### 3 Turn handle and/or key to open door.



Replace batteries if door fails to open when green light is ON and "OPEN" message appears.



Turn key counter-clockwise, then turn handle clockwise.

### 4 Turn handle and/or key to close door.

- Confirm proper closure of safe by turning handle/key back to original state.



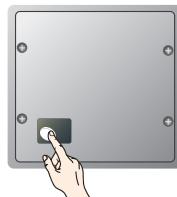
## Changing Password



### Attention

Safe can be programmed with either 1 or 2 passwords.

- 1 Enter current password and open door.
- 2 Press white memory button located inside door.
  - “-CodE-“ will be displayed, then “USEr\_” will be displayed.
- 3 Press 1 then START button.
  - “-----” will be displayed.
- 4 Enter new 6-digit password.
  - “AgAin” , then “-----” will be displayed.
- 5 Enter new password again.
  - “In 1” will be displayed.
- 6 New password is set.
  - Confirm new password works with door open.



To add second password, Press 2 (in step 3) and repeat steps.

## Sound Effect ON/OFF

1. Open door and press white memory button for 3 seconds. After “beep” message appears, “On-OFF” will be displayed.
2. Press 0 then START for sound ON. Press 1 then START for sound OFF.

## Trouble-shooting

Situation	Possible Cause	Measures
No response when START button pressed	I Dead battery	I Replace new batteries
	I Incorrect insertion of batteries	I Confirm correct insertion of batteries
	Keypad lock mode ON	I Press START for 3 seconds to deactivate keypad lock mode
	I Circuit error	I Contact store where safe was purchase
Alarm continues ringing and safe does not work	I 5 times wrong password input	I Enter correct password or wait 3 minutes until automatic alarm stops
"Err-03" message appears	I Incorrect password	I Enter correct password
Green light ON, does not open when "OPEN" is displayed	I Low battery	I Replace new batteries
	I Incorrect turning of handle/key	I Turn handle clockwise
	I Lock equipment error	I Contact store where safe was purchase
Cannot change password	Exceeded time limit during password change	I Enter password in under 5 seconds
	Keypad malfunction	I Contact store where safe was purchase
	Button error	I Contact store where safe was purchase
"Lo_bAt" message appears	I Low battery	I Replace new batteries
"Act" message appears	I Keypad lock mode ON	I Press START for 3 seconds to deactivate keypad lock mode
Forgot password		I Contact store where safe was purchase
Lost key		I Contact store where safe was purchase

## Anchoring Instructions (Only for safes with pre-drilled anchor holes)

**Notice :** Anchor bolt must be inserted into floor BEFORE safe is bolted down.

1. Anchor bolts vary according to model. After checking anchor bolt size, drill a hole to a depth of 2 inches (50mm). Refer to chart for appropriate hole size.

A(Anchor size)	B(Diameter of hole)
1/4"(M6×50mm)	Ø10(5/16")
3/8"(M10×101mm)	Ø14(9/16")
3/8"(M10×152mm)	Ø14(9/16")

2. Insert anchor bolt and pipe into hole.
3. Place flat washer and nut on anchor bolt. Tighten with 14mm wrench to allow anchor bolt to expand and secure into floor.
4. Remove nut and washer from anchor bolt.
5. Place safe on top of anchoring bolt through center hole on bottom of safe.
6. Place washer, lock washer, and nut on anchor bolt. Tighten

**Notice :** 1. Bolt may need to be cut.

2. Place cover over hole for fire resistance.

