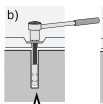
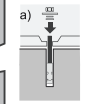
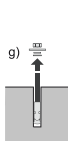
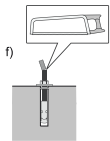
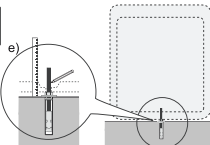
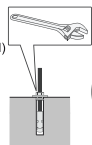
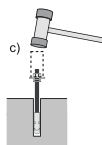
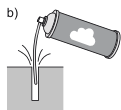
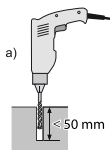
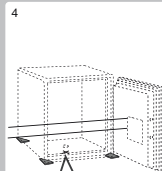
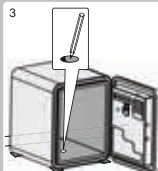
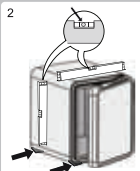
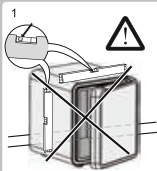




(Only for anchor option)
Safe must be anchored before being use.



IMPORTANT:

For a compliant fixing, the expansion bolt supplied with the safe must be fixed in a concrete compressive support of 25 MPa and the tightening torque must be of 50 NM.

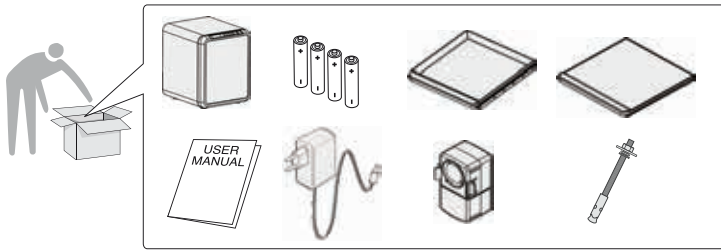
LUCELL
UNI-040



Quick user guide

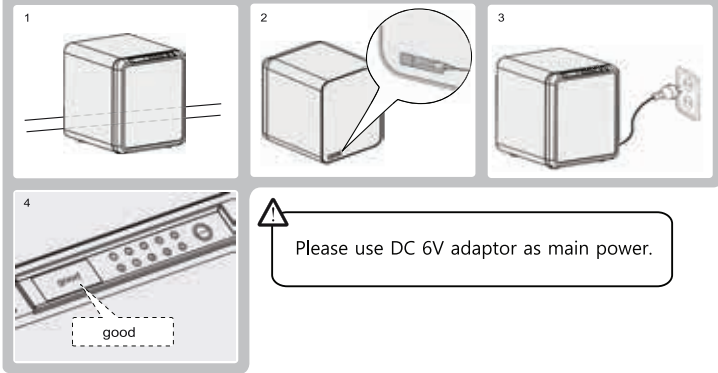


EAGLE SAFES



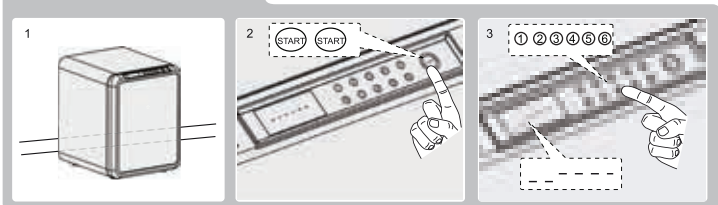
Connecting main power =

To connect main power.



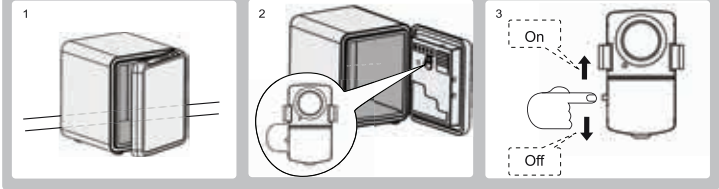
Hide PIN code =

To hide PIN code.



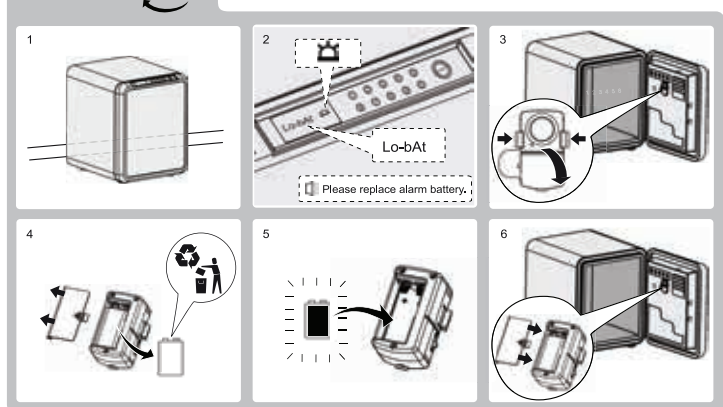
Alarm on/off =

To turn on/off Alarm.



Alarm Battery =

To replace Alarm battery.



No Adaptor AC power

Sound off


Keypad locked

Battery power indicator

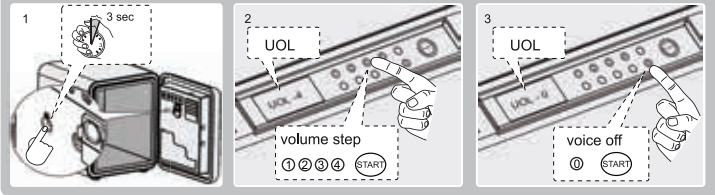
Lock device activated


Lock device in open position

Alarm on

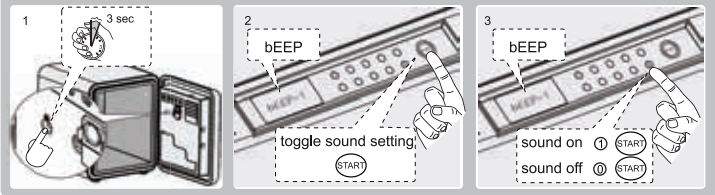
Volume Control = 

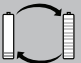
To control volume.



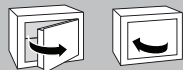
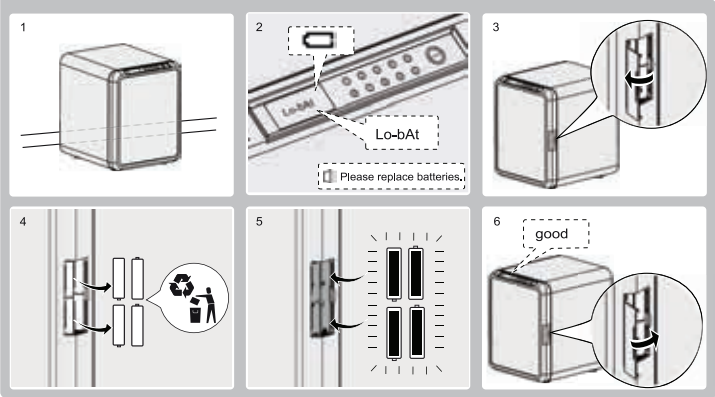
Sound Control = 

To control sound.

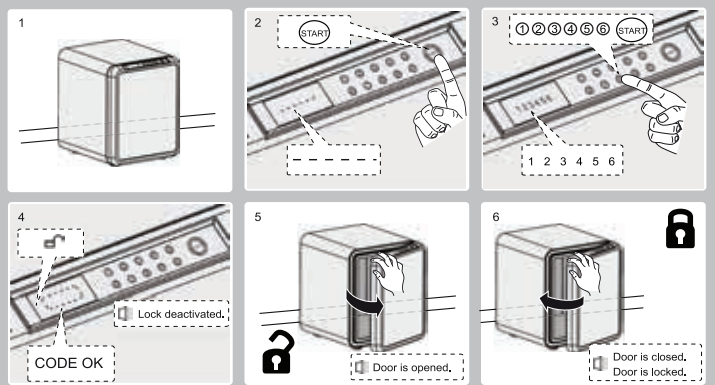


Replacing auxiliary power = 

Low battery.

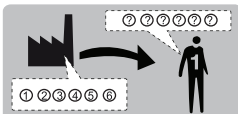


To open & close.



Caution :

1. A malfunction may occur if keypad becomes moist or dirty with metallic alien substances.
2. Do not scratch or impact on the LCD display with a sharp object.
3. Do not expose a safe to dangerous chemicals such as gasoline, benzene, solvent, thinner, or etc.
4. Do not apply direct heat or fire.
5. When not using a safe for a long time, remove batteries from the safe.
6. Do not turn the handle excessively. The handle may be damaged.



To set up your own PIN code. User 1.

1

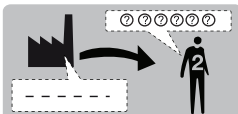
2 - CODE -

3 1 START

4 0 0 0 0 0 0 START
???????

5 0 0 0 0 0 0 START
???????

6 In 1
Passcode has been successfully registered.



To set up your own PIN code. User 2.

1

2 - CODE -

3 2 START

4 0 0 0 0 0 0 START
???????

5 0 0 0 0 0 0 START
???????

6 In 2
Passcode has been successfully registered.

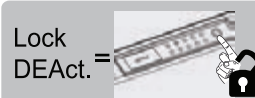


To lock the keypad.

1

2 START
3 sec

3 Act
Lock mode activated.



To unlock the keypad.

1

2 START
3 sec

3 dEAct
Lock mode deactivated.