

INSPIRING
PROFESSIONALISM

EAGLE SAFES

Operating instructions



[NPS]



[SBDS]

Congratulations on your purchase of an Eaglesafe. This safe was developed to meet customers high demand for stylish modern design.

Please read these instructions carefully and note the operational requirements and cautions. Failure to do so may cause damage and/or personal injury and will invalidate the warranty. Please keep these instructions safe for future reference.

SUN SAFES MFG. CO. KOREA

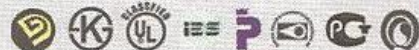
ADDRESS #391-1 DOKEUN-RI WOLLONG-MYEON PAJU CITY GYEONG-DO, KOREA

TEL +82-31-945-9300~7 FAX +82-31-945-9400, 0340

WEB SITE www.eaglesafes.com E-MAIL info@eaglesafes.com



EAGLE SAFES



I. HOW TO OPERATE YOUR SAFE

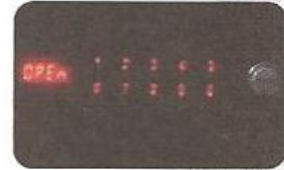
1. Opening the Door

Step 1. Push the START button on the control panel.

The panel will show "-----".

Step 2. Enter 1-2-3-4-5-6, or 5-6-7-8-9-0, which has been programmed at the factory.

After pressing the 6 numbers, the LCD display will say "OPEn".



[NPS]

Step 3. Turn the handle clockwise before the word "OPEn" disappears.

Turning the handle counter-clockwise will lock the door.



[SBDS]

Step 3. The drawer will come out automatically.

The drawer will automatically lock when you push it closed fully.



! CAUTION

When an incorrect code is entered, the LCD display will display "Error" and you will hear a beep. Try the right code again after the word "Error" disappears.

2. Installing/Replacing the Batteries

When installing or replacing the batteries, the LCD display will automatically scan the status of the electronic lock system. If everything is fine, the word "good" will be displayed. The safe is now ready to be used!

When the battery is low, "Lo-bAt" will be seen on the LCD display. You should replace the batteries immediately.



Remove the battery cover plate and install the four 1.5V (size AA) alkaline batteries. Ensure that the (+) and (-) positions are correct.

[NPS]

Slide the battery cover to the left and replace with fresh batteries.



[SBDS]

The battery tray is located on the right side of the drawer body.

Gently press the battery tray on the right of the drawer. Pull the protruding tray to the end. After replacing the batteries, push the battery tray and gently press it once more.



II. HOW TO INPUT YOUR OWN PERSONAL CODES

The safe can be programmed with two personal codes. After opening the safe, you should program two codes of your own to take the place of the two factory-preset codes, which are 1-2-3-4-5-6 and 5-6-7-8-9-0.

! CAUTION

Do not close the safe until a new code has been entered. Try the new code before locking the safe.

※ Select password from 4 digits to 20 digits

1. Programming the First Code

Step 1. After opening the door, press the memory button.
(Please see next page for the location of memory button.)
LCD display will show "1USER", "COdE" and "-----" successively.

Step 2. Enter your current password.
If the code is correct, the LCD display will show "PaSS".

Step 3. Enter your new code(4~20digit codes) when the LCD display shows "1-COdE", and press START button.
Enter your new password once again when the LCD display shows "2-COdE" and press START button.
New password has been entered successfully if you see "FInISH" on the LCD display.

2. Programming the Second Code

Step 1. After opening the door, press the memory button twice.
And follow above steps in a same way.

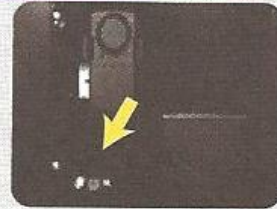
! CAUTION

Test the new code with the door open. If the new code does not work, retry the above steps.

! MEMORY BUTTON LOCATION

[NPS]

The memory button is located inside of the door.



[SBDS]

The memory button is located on the right side of the drawer body. Gently press the battery tray on the right of the drawer. Pull the protruding tray to the end and you will find red memory button



💡 TIP

If you want to use just one personal code, input the same code both times. Please ensure that you do this in order, following the instructions for programming the first code and then the instructions for programming the second code.

III. HOW TO REPLACE BATTERIES

when lack of power prevents the drawer from operating(SBDS model only)

1. Connect a 9V alkaline battery to an emergency battery terminal.
2. Enter your current password without pushing the Start button.
3. The panel will show "OPEn" and you can open the door.

! CAUTION

Continue to connect the 9V battery to the emergency battery terminal until the drawer is open. When you discontinue the connection, power will be cut off and the drawer will not open.



💡 WARNINGS AND CAUTIONS

1. The drawer may malfunction if metallic alien substances come in contact with the touch surface.
2. Do not scratch or impact on the touch surface with sharp objects.
※ Malfunction and surface breaks could result from scratches and inappropriate impacts.
3. Do not expose the touch surface to chemicals, such as gasoline, benzene, solvent, acetone and thinner.
※ Chemicals could cause major damage to the touch surface.
4. Do not apply direct heat or fire.
※ Extreme temperature may cause the touch surface to break down.

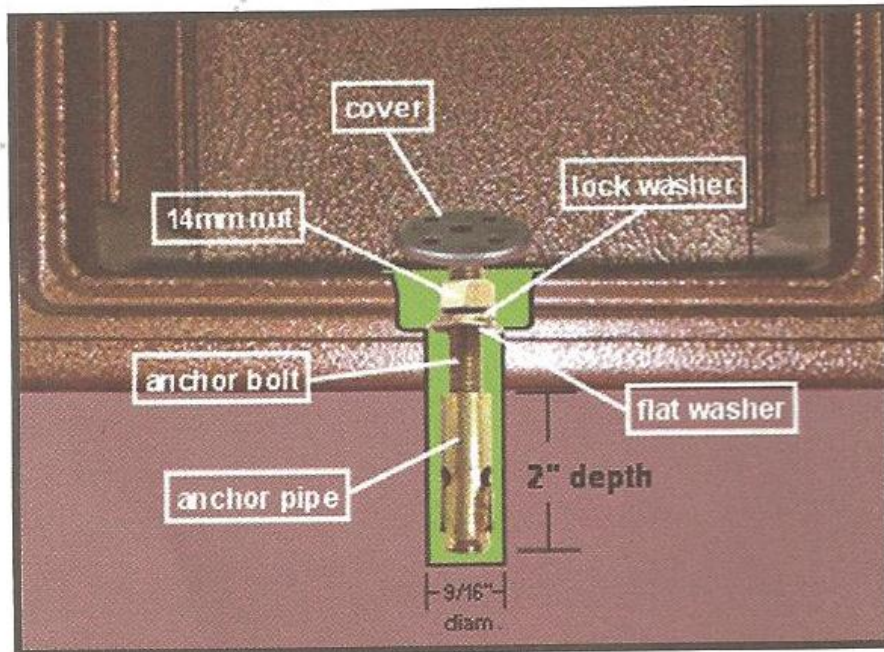
IV. TROUBLE SHOOTING

- The display shows "Error" and there is a constant buzzing sound.
 - ▶ If the incorrect code is entered 5 times in a row, the display will show "Error", the red light will illuminate, and a series of quick beeps will sound for approximately 3 minutes. The correct code cannot be entered until after this 3-minute delay. Try the correct code after the 3 minutes of short series of beeps stop.
- You follow the opening procedure but cannot open the safe.
 - The safe repeats self testing!
 - The e-lock seems to be dead!
 - ▶ Check if the batteries were inserted properly, or try changing batteries to new ones. Alkaline batteries are suggested.
- Can't key in any code.
 - ▶ 1) Please check if the alarm is ringing with error sign at the LCD window. If so, please see question #1.
 - ▶ 2) Humidity can harm the electronic systems. Please check if the surroundings have been humid, or someone wiped out the safe with water or any liquid detergent. Even if you didn't clean the electronic lock itself, the liquid detergent can flow into the lock system along the safe surface.
- After the drawer opened, it will not be locked!
 - ▶ After you open the drawer, it will not be locked for about three seconds. This is normal, and you can safely use the drawer.

V. WANT TO SECURE YOUR FIRE SAFE TO THE FLOOR?

(Safes with pre-drilled anchor hole only)

Note : Anchor should be fitted into floor BEFORE safe is bolted down.



1. Drill 9/16" diameter hole in concrete to a depth of 2 inches.
2. Insert anchoring bolt & pipe into hole.
3. Place flat washer & nut on anchoring bolt and tighten (14mm wrench) to allow anchor pipe to expand and secure into floor.
4. Remove nut & washer from anchoring bolt.
5. Place safe on top of anchoring bolt through center hole in bottom of safe. (If your safe has rubber feet, you should remove them)
6. Place washer, lock washer & nut on anchoring bolt and tighten.
7. Place cover over hole. (Note : Bolt may need to be cut.)

SUN SAFES MFG. CO. KOREA

ADDRESS #391-1 DOKEUN-RI WOLLONG-MYEON PAJU CITY GYEONG-DO, KOREA

TEL +82-31-945-9300~7 FAX +82-31-945-9400, 0340

WEB SITE www.eaglesafes.com E-MAIL info@eaglesafes.com



E4BV.0908