

Jewellery Box of My life

# LUCELL

LU-3000 User Manual



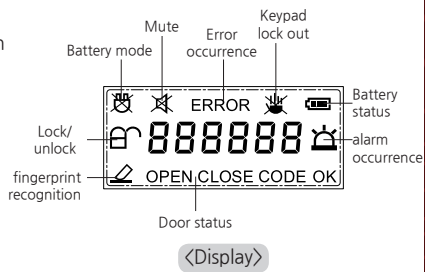
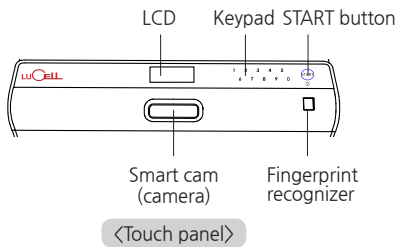
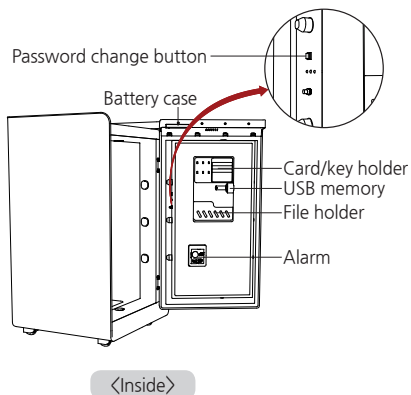
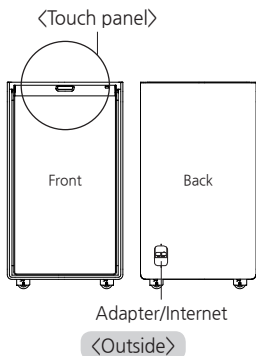
# 1. Safety Precautions

**Safety precautions are to prevent any unexpected risk or damage.**

**Please read before use.**

- Be careful opening and closing door. Fingers or objects may get stuck.
- Keep away from children.
- Do not hit edge of safe to avoid injury.
- Do not slam door to avoid injury or damage.
- Safe is heavy. Be careful when moving or installing safe to avoid injury.
- Firmly fix safe to ground when installing.
- When moving safe, inquire a professional if needed.
- Improper handling of safe can cause damage to floor or table.
- Avoid breaking glass to prevent injury. Do not apply force.
- Avoid placing fragile objects, such as ceramic or glass, on safe.
- Product may malfunction if any foreign metal substances or moisture enter keypad.
- Do not scratch keypad with any sharp material.
- Do not apply excessive force to keypad.
- Avoid exposure to any chemicals (gasoline, benzene, solvent, acetone, thinner, etc.)
- Remove batteries when safe is not used for a long time.
- Avoid direct fire or heat to the safe and keypad (touch screen).
- Any wrong operation may cause injury or damage to safe.
- Safe can be broken into using cutting or welding tools. Our company is not liable for any stolen items.

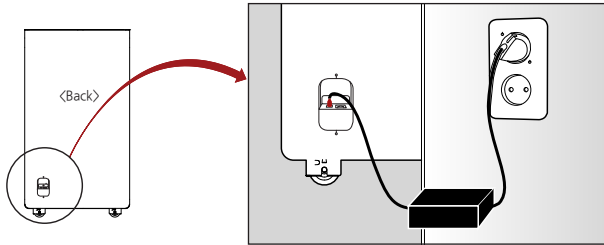
## ❖ Overview



## 2. Connecting Adapter

### ⚠ Notice

- This safe uses DC 12V adapter as main power supply.  
(Specification or adapter design is subject to change without prior notice).  
Incorrect adapter may cause problems to system.  
(Not covered by company warranty).



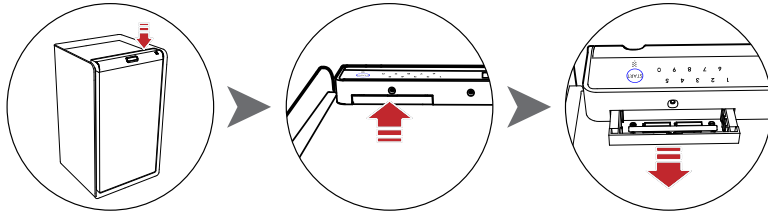
1. Check back of safe for adapter insert location.
2. Connect DC12V adapter jack to power plug.
3. Connect adapter power cord to outlet.

Connection is confirmed when screen starts self-test, plays sounds, and displays “good.”

### 3. Inserting Batteries

#### ! Notice

- Battery is auxiliary power supply. Use adapter.

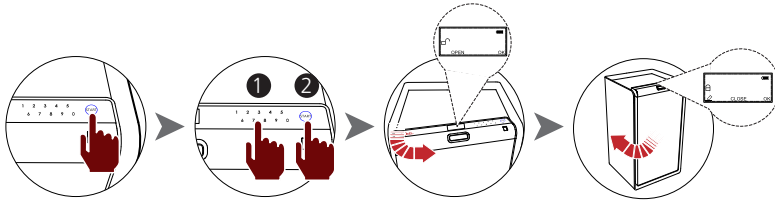


1. Battery compartment slightly pops out when gently pushed.
2. Pull battery compartment and insert new batteries. Use 1.5V alkaline batteries (AA x 4).
3. Connection is confirmed when screen starts self-test, plays sounds, and displays “good.”
4. Slide battery cover back until a click is heard.

#### ! Replace battery immediately when:

- screen displays Lo-bAt with low voltage icon (🔋)
- numbers on touch button or LCD are blurry or repeatedly turn on and off..
- screen fails to turn on after you press START button.
- LCD malfunctions.
- system turns off immediately after entering password.
- safe door fails to open when “OPEN” message appears after password is entered.

## 4. Opening/Closing Door



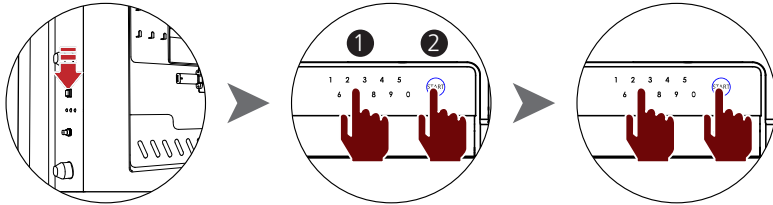
1. Press START button. "-----" will be displayed on screen.
2. Input password and press START button.  
Input factory password "1,2,3,4,5,6."
3. Pull safe door to open.
  - Display will show 'OPEN' once door is open.
4. Close door. Safe will automatically lock with "CLOSE" displayed on LCD.
  - Confirm proper closure by checking lock icon (🔒) on LCD.

### ⚠ Notice

- Press START button twice for security mode to hide password.
- Press START button to cancel password entry.
- Safe will not open if door is not opened within 3-4 seconds after green light turns ON.
- "Err-03" indicates incorrect password.
- 5 consecutive incorrect passwords will sound alarm for 3 minutes. Press START button and enter correct password to stop alarm.

# 5. Changing Password

Enter current password and open door.



1. Press Password change button located inside door.  
“-CodE-“ and “-----“ will be displayed.
2. Enter new password and press START button.  
Password can be set with 4-20 digits.  
“AgAin” then “-----” will be displayed.
3. Enter new password again and press START button.
4. New password is set.  
“USEr\_1“ is displayed on LCD and OK flickers.

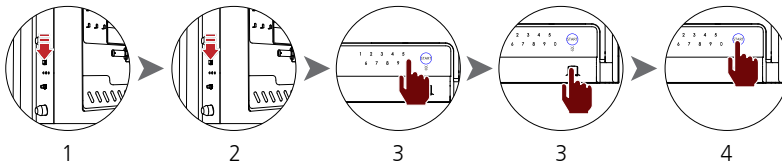
## ! Notice

- Confirm new password works before closing door.

## 6. Registering and Deleting Fingerprint

### Registering fingerprint

Enter current password and open door.

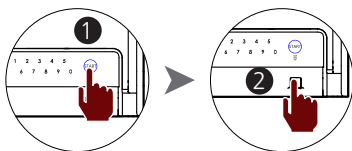


1. Press password change button inside door for 3 seconds until LCD displays “SEt.”
2. Press password change button again for a short time.  
- “FingEr” will be displayed on LCD along with voice sound of “Fingerprint set up.”
3. Press 0 and place finger on fingerprint recognizer until “Id-specific number” appears.
4. Press start button to finish.
5. Press 0 and repeat steps to add more fingerprints”

- ※ Maximum registration of 10 fingerprints possible. “Id-specific number”
- ※ signifies number of registered fingerprints.
- ※ When fingerprint is correctly registered, Id and specific number will be displayed.

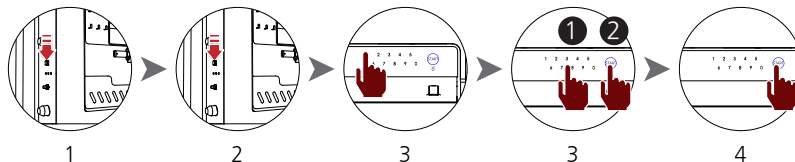


## Opening Door with Fingerprints



1. Press START button and place registered finger on fingerprint recognizer.
  2. Pull safe door to open.
- Display will show 'OPEN' once door is open.

## Deleting Fingerprint



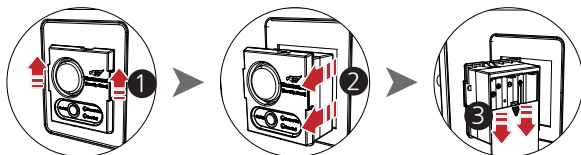
1. Press password change button inside door for 3 seconds until LCD displays "SET."
2. Press password change button again for a short time.  
"Finger" will be displayed on LCD along with voice sound of "Fingerprint set up."
3. Press 1 and select fingerprint number to be deleted and press START button.  
'dEL\_number' will be displayed on LCD
4. Press START button to finish.

※ To delete all fingerprints at once, press password change button once for a short time instead of fingerprint Id number.

# 7. Using Alarm

Alarm is located inside door.

## 1. Inserting batteries for alarm



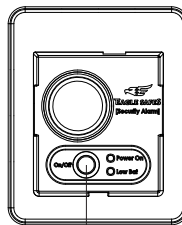
- 1) Open door and lift alarm to remove.
  - Be careful not to disconnect cable.
- 2) Remove battery cover on back of alarm.
- 3) Insert batteries according to +/- . Use 1,5V AA battery x 4.
- 4) Slide battery cover back and insert alarm.

## 2. Replace battery when:

- Lo-bAt appears on LCD with alarm icon and voice sounds "Replace the battery in alarm."
- red LED continues to stay lit or flickers on alarm.

## 3. Turning on alarm

- 1) Press red button to turn on.
  - Green and red LED lights will turn on and then off.
- 2) Check if green LED turns on.
  - If green LED flickers, adapter power is not connected to safe. This will shorten alarm battery life. We suggest to connect AC adapter.
- 3). Close door.
  - Alarm will work in 10 seconds.



Power button

#### 4. Activating and disabling alarm

##### ⚠ Notice

To properly function, safe should be connected to AC adapter, not batteries

1. Alarm goes off when:

- safe is inclined more than 15° from installed position.
- a shock is given to safe door.
- safe is open for more than 5 minutes.
- 5 consecutive incorrect passwords are entered.
- locking device or door is forcibly opened.
- safe is moved more than 1M at constant speed.

2. Press START button and enter password to stop alarm.

##### ⚠ Notice

- 1) Alarm operates only with door closed.
- 2) If safe moves locations, open door and then close to avoid alarm malfunction.

## 8. Convenient Functions

### 1. Password Security Mode

Press START button twice to hide password.

### 2. Keypad Lock Mode

- 1) Press START button for more than 3 seconds until “Act” appears. “Act” message signifies activation of keypad lock mode. Any keypad input will only display “Act.”
- 2) To deactivate keypad lock mode, press START button for more than 3 seconds until “dEAct” appears.

### ! Notice

Keypad Lock Mode will remain despite removal of batteries.

### 3. Voice Set up

- 1). Open door and press password change button for 2 seconds. LCD will display “Set.”
- 2). Press password change button 2 times again for a short time.  
- “Vol” will be displayed on LCD.
- 3) Enter a number between 1 and 4. Press START button.

# 9. Smart cam manual (optional)

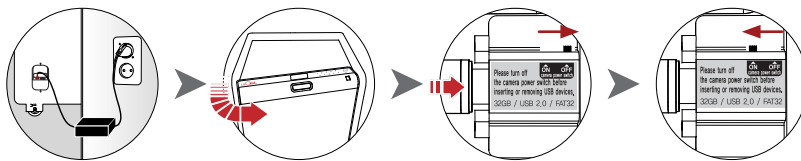
## ⚠ Notice

Camera operates only when the safe's power adapter is plugged-in.

ONLY the USB memory stick with FAT32 format can be used. Maximum available capacity is 32G.

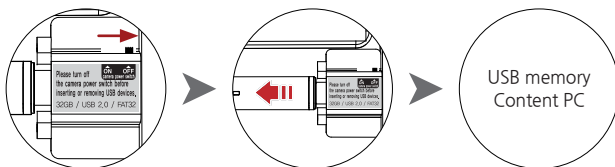
### 1. Setting camera

- 1) Open safe door and check if camera power is off.
  - 2) Insert USB memory stick and turn on camera power.
    - USB memory is properly operating when the LED blinks.
    - USB memory is improperly operating if the LED is off or fails to blink.
- In this case, turn off the power adapter. Turn it back on after 30 seconds.



## 2. Checking the contents of the USB memory stick

Contents can be checked when the USB memory is inserted into a PC.



1. Turn off camera power
2. After LED turns off, pull USB memory stick to the left and remove.
  - Memory may get damaged if USB memory stick is removed while power is on.
  - Saved videos in last minute may get damaged and be unable to play if the power is turned off.
3. Connect USB memory stick to PC.

### ! Notice

Folders are created by dates and files are organized according to time.  
Movies can be viewed by double-clicking the file.

## 3. Formatting the USB memory stick

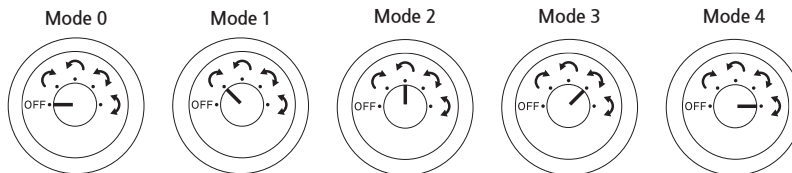
1. Insert the USB memory stick into the PC.
2. Under My Computer, right-click on "camera USB."
3. Format page will appear when "format" is selected.
4. Check if the file system domain is "FAT32." Click the start button to format.

! Caution: All contents will be erased when formatting.

! Caution: Videos will not be saved if the file system domain is not "FAT32."

# 10. Watch winder manual (optional)

⚠ Each watch has different winding direction. Check winding direction.



Mode 0 : OFF  
Mode 1 : Rotates for 2 minute to clockwise, then 20 minutes off.

Mode 2 : Rotates for 2 minutes to counter clockwise, then 50 minutes off.

Mode 3 : Rotates for 2 minutes to clockwise, 30 minutes off, rotates 2 minutes to counter clockwise, then 30 minutes off.

Mode 4 : Rotates for 5 minute to clockwise, then 5 minute to counter clockwise.

Brand	Mode	Brand	Mode	Brand	Mode
Ball	Mode 3	Hamilton	Mode3,4	Panerai	Mode3,4
B a u m e & Mercier	Mode1,2,3	Hublot	Mode3,4	Patek Philippe	Mode2
Bell & Ross	Mode1,3	Invicta	Mode3,4	Rolex	Mode3
Blancpain	Mode2	IWC	Mode3,4	Tag heuer	Mode3,4
Breitling	Mode1,3	Jaeger LeCoultre	Mode2,3	Tissot	Mode1,3
Carl Bucherer	Mode3	Longines	Mode1,3	Tutima	Mode3,4
Cartier	Mode1,3	Louis Vuitton	Mode3	Ulysse Nardin	Mode3,4
Chanel	Mode3	Luminox	Mode1,3	V a c h e r o n Constantin	Mode1,2,3
Chopard	Mode3,4	Montblanc	Mode3,4	Xemex	Mode1,3
Concord	1,3 Mode	Omega	Mode1,3	Zenith	Mode3
Corum	1,3 Mode	Oris	Mode1,3	Zeno	Mode1,3

# 11. Troubleshooting

Situation	Possible Cause	Measures
No response when START button pressed	<ul style="list-style-type: none"> <li>• I Dead battery</li> <li>• I Incorrect insertion of batteries</li> <li>• I Keypad Lock mode ON</li> <li>• I Circuit error</li> </ul>	<ul style="list-style-type: none"> <li>• I Replace new batteries</li> <li>• I Confirm correct insertion of batteries</li> <li>• I Press START for 3 seconds to deactivate Keypad Lock Mode</li> <li>• I Contact store where safe was purchased.</li> </ul>
Touch panel malfunctions	<ul style="list-style-type: none"> <li>• Pressed incorrect place</li> <li>• Panel touched by another body part</li> </ul>	<ul style="list-style-type: none"> <li>• Press correct place on panel</li> <li>• Avoid touching panel with another body part</li> </ul>
	<ul style="list-style-type: none"> <li>• Foreign object on touch panel</li> <li>• Foreign object in hand</li> </ul>	<ul style="list-style-type: none"> <li>• Remove foreign object from touch panel</li> <li>• Remove foreign object from hand</li> </ul>
Safe not powered by adapter	<ul style="list-style-type: none"> <li>• Bad adapter jack connection</li> </ul>	<ul style="list-style-type: none"> <li>• Clean adapter jack and reconnect.</li> </ul>
Safe not powered by battery	<ul style="list-style-type: none"> <li>• Check battery life</li> <li>• Bad battery connection</li> </ul>	<ul style="list-style-type: none"> <li>• Replace with new battery</li> </ul>
Cannot change password	<ul style="list-style-type: none"> <li>• Exceeded time limit during password change</li> <li>• Wrong password or incorrectly changed</li> <li>• Button problem</li> </ul>	<ul style="list-style-type: none"> <li>• I Enter password within 5 seconds</li> <li>• Follow instructions</li> <li>• Contact store where safe was purchased.</li> </ul>
Forgotten password or lost key		<ul style="list-style-type: none"> <li>• Contact store where safe was purchased.</li> </ul>
"Err-03" message appears	<ul style="list-style-type: none"> <li>• I Incorrect password</li> </ul>	<ul style="list-style-type: none"> <li>• I Enter correct password</li> </ul>
Alarm continues ringing and safe does not work	<ul style="list-style-type: none"> <li>• I 5 consecutive incorrect password entered</li> </ul>	<ul style="list-style-type: none"> <li>• I Enter correct password or wait 3 minutes until automatic alarm stops</li> </ul>
Door does not open when "OPEN" is displayed	<ul style="list-style-type: none"> <li>I Low battery</li> <li>Objects around door</li> <li>I Lock equipment error</li> </ul>	<ul style="list-style-type: none"> <li>• I Replace with new batteries</li> <li>I Remove objects away from door</li> <li>I Contact store where safe was purchased.</li> </ul>
Door does not automatically lock after closing	<ul style="list-style-type: none"> <li>Door is not completely closed</li> <li>Objects around door</li> </ul>	<ul style="list-style-type: none"> <li>Ensure door is completely closed against safe body</li> <li>Remove objects away from door</li> </ul>









LUCELL

[www.lucell.net](http://www.lucell.net)